



Northern California Women's Hockey League

General Membership Meeting

March 6, 2010

Agenda

- 2:00 – 2:05 Welcome
- 2:05 – 2:15 2009 Goals & Accomplishments
- 2:15 – 2:20 2010 Goals
- 2:20 – 2:30 Vice President's Report
- 2:30 – 2:40 Treasurer's Report
- 2:40 – 2:45 USAH Registration Changes
- 2:45 – 2:55 Elections
- 2:55 – 3:05 Dates to Remember
- 3:05 – 3:20 Questions and Answers
- 3:20 – 3:30 Raffle



2009 Goals Enhance League Member Experience



Increased inter-division engagement

3 League-wide Scrimmages and 5 Divisional Challenges over 2009



Launch Facebook page



Implement end-of-season player survey

Keep an eye out for the survey in April



Improve Processes

Updated Sub & Buyout Policies; Red Skills Criteria

Goalies: full-season schedules, formalized evals and goalie clinics

NCWHL schedule on Google Calendar:

http://www.nickyrobinson.com/ncwhl/ncwhl_calendar.html



Succession planning to facilitate transition for all volunteer positions



Benefit Tournament



2009 Goals: Maintain Increased Player Registration



Launch Trial Referral Bonus (Summer 2009)

19 referrals in 2009; New skaters in Green (12), Red (4), Maroon (2), and Blue (1)



GHATD player conversion

Feb 2009 GHATD – 25% conversion; Aug 2009 GHATD – 19% conversion



Player retention

League has grown 12% since Winter 2007; average skater retention of 90%
Maintaining division growth: 5 teams in Red, 4 teams in Blue



Continue NCWHL Assistance Fund

8 awards in 2009; 20 awards in 3 years of program



Continue to offer best league value

According to the IIHF, there are 166 registered women hockey players in China ... the NCWHL currently has 218 players!!!



Comparison of Bay Area Adult Hockey Leagues

League	Rinks	Ice Slots / Season	Cost / Season	Cost / Ice Slot
NCWHL	Belmont, Fremont, Redwood City	24	\$425	\$17.71
Sharks Ice Adult Hockey League	Oakland, San Jose, Fremont	24 plus playoffs	\$567	\$21.79
Pacific Hockey Association	Cupertino, San Mateo	17 plus Playoffs	\$488	\$25.68
San Francisco Adult Hockey League	Yerba Buena	15 plus playoffs	\$500 (estimated)	\$27.78
Ice Oasis	Redwood City	26	\$815	\$31.35

Notes:

1. Prices as of February 2010 for the current season
2. Price for Sharks Ice, PHA, and SFAH can change depending on the number of players a team chooses to put on its roster. The costs above are calculated based on 15 players per team, the NCWHL maximum.
3. For Sharks Ice and PHA, playoffs are not always guaranteed. This calculation assumes 2 playoff games.

NCWHL GENERAL MEMBERSHIP MEETING --- March 2010



Women encouraged to 'Give Hockey a Try'

By: Lindsay Smith
Special to The Examiner
August 19, 2009

BELMONT — Women interested in picking up the sport of hockey now have a chance to face off against one another.

The Northern California Women's Hockey League is hosting their semiannual "Give Hockey a Try Day" Aug. 29 at Belmont Iceland. Offered to women 18 years of age and older, the two-hour Saturday event will allow potential players to try the sport with other beginners and see if it is right for them.

There is no experience necessary for "Give Hockey a Try Day." Many women who attend have only been on skates a couple times and know nothing about hockey, according to event organizers.



Power play: The play is not rough during the NCWHL's "Give Hockey a Try Day" but participants should be comfortable with a moderate level of physical activity. (Courtesy of April Tse)

<http://www.sfexaminer.com/local/Women-encouraged-to-Give-Hockey-a-Try-53743507.html>



2010 Goals

Enhance League Member Experience

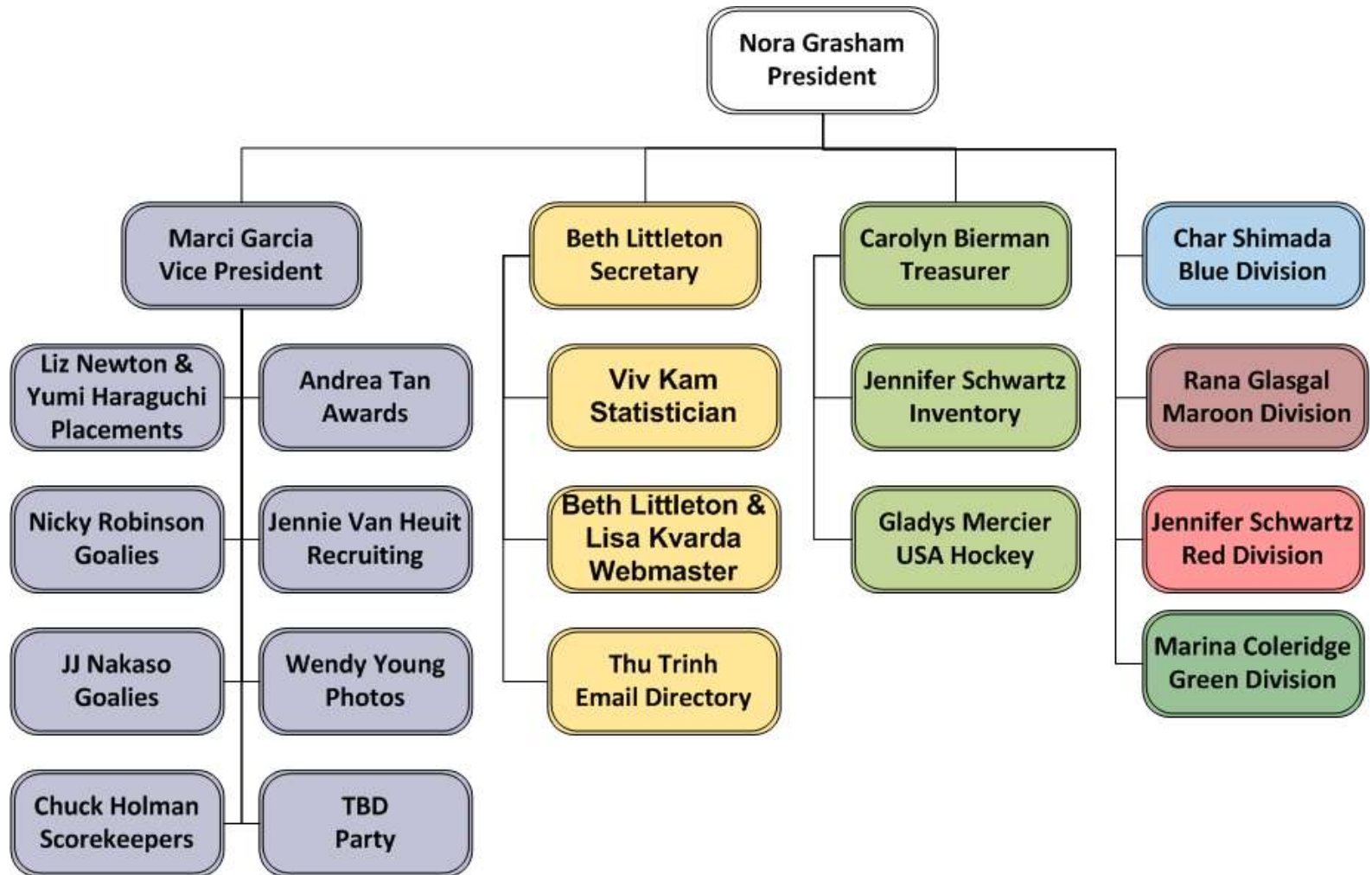
- Continue inter-division engagement
- Maintain increased goalie engagement
- Benefit Tournament / Charity event

Maintain Increased Player Registration

- Increase publicity and league exposure
- GHATD player conversion
- Player retention
- Publicize and continue NCWHL Assistance Fund & Referral Bonus
- Offer best league value in Bay Area



NCWHL Organization



Vice President's Report

- Award Coordinator – Andrea Tan
- Coach Coordinator – Katherine Yoshii
- Goalie Coordinator – Nicky Robinson
- Photo Coordinator – Wendy Young
- Party Coordinator – ****Help Wanted Again****
- Placement Coordinator – Liz Newton & Yumi Haraguchi
- Recruitment Coordinator – Jennie Van Heuit
- Referee Coordinator – JJ Nakaso
- Scorekeeper Coordinator – Chuck Holman



Current Goalie Assignment System

Goalies are currently assigned to a division, similarly to skaters

Division ratings perceptions

- Goalie ceiling
- Goalie's jersey color influences team perception
- Not enough goalies for some divisions

Divisional ratings challenges

- Difficulty putting goalies into games in “lower” divisions
- Limits bringing in higher-skilled (e.g. Blue-level) goalies
- Schedule difficulties when we have variation in both team and goalie numbers in each division



New Goalie Assignment System

Formalize relative skill level ranking and assignment

Ranking will be based on a combination of criteria

Removes divisional ratings for goalies and move to a ranking system 1 – N

Supports movement up and down the ranks

Goalies will no longer wear divisional colors

- White (home) and black (away) jerseys
- Costs: New home and away jerseys for each goalie

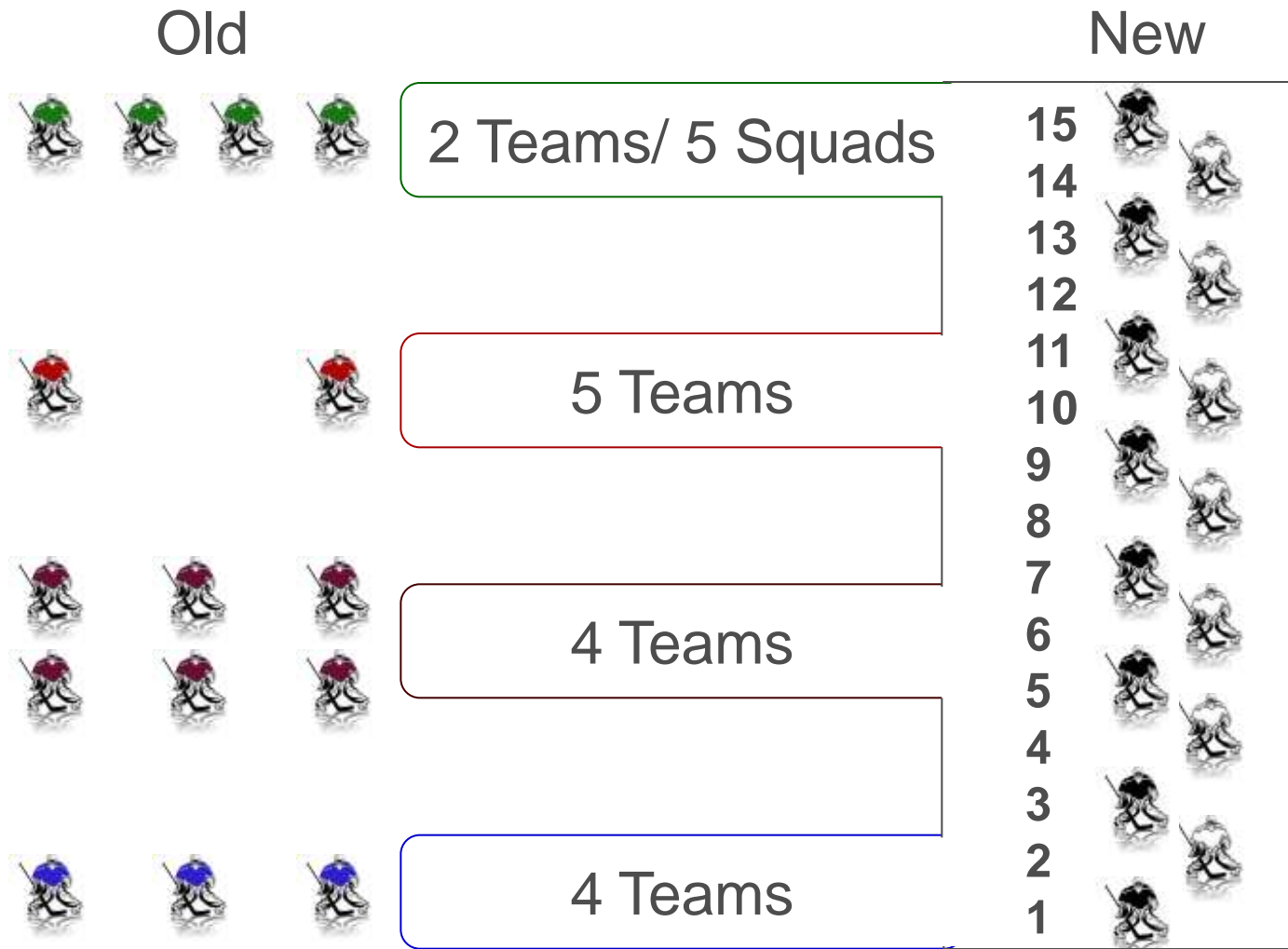
Goalie coordinator will

- Assign two similarly skilled goalies in net for each game
- Offer goalies opportunities to “play up the rank” to improve their skills
- Cap the total number of goalies in the league
- Determine “cut lines” for assigning goalies games in a given division
- After the schedule is published, use rankings for appropriate substitute goalies



NCWHL GENERAL MEMBERSHIP MEETING --- March 2010

Goalie Assignments Structure



GHATD

Added Session!!!



Give HOCKEY a Try! **WOMEN**

LEARN TO PLAY HOCKEY
IN A FUN & SAFE ENVIRONMENT

NO EXPERIENCE NEEDED
NO EQUIPMENT NEEDED

SATURDAY, APRIL 3, 2010
5:15 to 7:15 pm

BELMONT ICELAND
815 Old County Road, Belmont CA
650.592.0533
www.belmonticeland.com

NORTHERN CALIFORNIA WOMEN'S HOCKEY LEAGUE

Join the NCWHL for the Semi-Annual
GIVE HOCKEY A TRY DAY (GHATD)

GHATD is an opportunity for women of ALL ages* to try hockey in an encouraging & safe setting. The Northern California Women's Hockey League (NCWHL) will dress you in the necessary gear, give you on-ice instruction, and finish off the session with a scrimmage.
*minimum age is 18

Cost is \$20.00
To Register Email: ncwhl.ghatd@gmail.com
please provide your name, address, email, and equipment needs and sizes

PLEASE REGISTER EARLY!
(spaces are limited for this popular event)

for league info, visit: www.ncwhl.com



Give HOCKEY a Try! **WOMEN**

LEARN TO PLAY HOCKEY
IN A FUN & SAFE ENVIRONMENT

NO EXPERIENCE NEEDED
NO EQUIPMENT NEEDED

SATURDAY, APRIL 24, 2010
6:15 to 8:15 pm

BELMONT ICELAND
815 Old County Road, Belmont CA
650.592.0533
www.belmonticeland.com

NORTHERN CALIFORNIA WOMEN'S HOCKEY LEAGUE

Join the NCWHL for the Semi-Annual
GIVE HOCKEY A TRY DAY (GHATD)

GHATD is an opportunity for women of ALL ages* to try hockey in an encouraging & safe setting. The Northern California Women's Hockey League (NCWHL) will dress you in the necessary gear, give you on-ice instruction, and finish off the session with a scrimmage.
*minimum age is 18

Cost is \$20.00
To Register Email: ncwhl.ghatd@gmail.com
please provide your name, address, email, and equipment needs and sizes

PLEASE REGISTER EARLY!
(spaces are limited for this popular event)

for league info, visit: www.ncwhl.com

April 3, 5:15 pm

April 24, 6:15 pm

NCWHL GENERAL MEMBERSHIP MEETING --- March 2010



Treasurer's Report: P&L*

	Winter 2008	Summer 2009
Beginning Balance	\$45,199.59	\$49,329.52
Income	\$77,453.03	\$76,084.43
(Expense)	(\$73,323.10)	(\$67,726.42)
Ending Balance	\$49,329.52	\$57,937.78
Profit/(Loss)	\$4,129.93	\$8,358.01

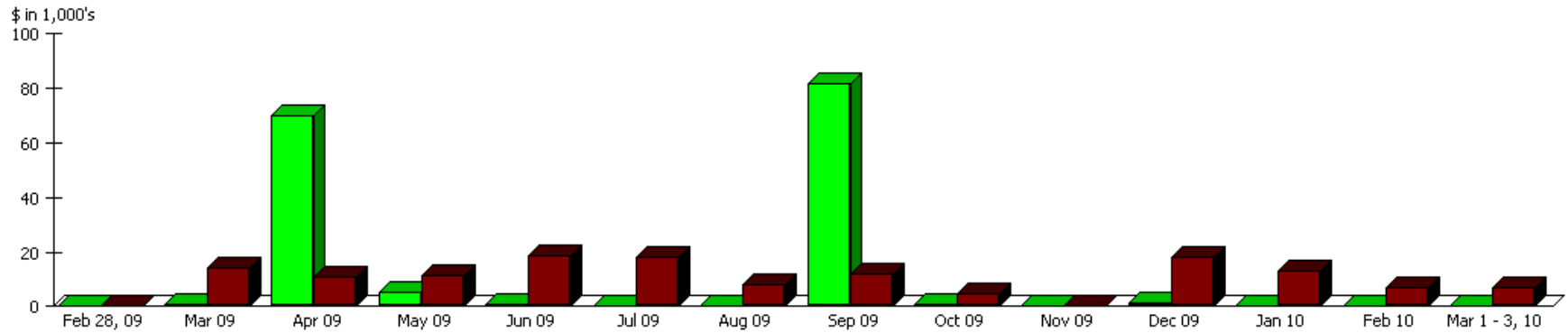
* These statements have not been verified or audited



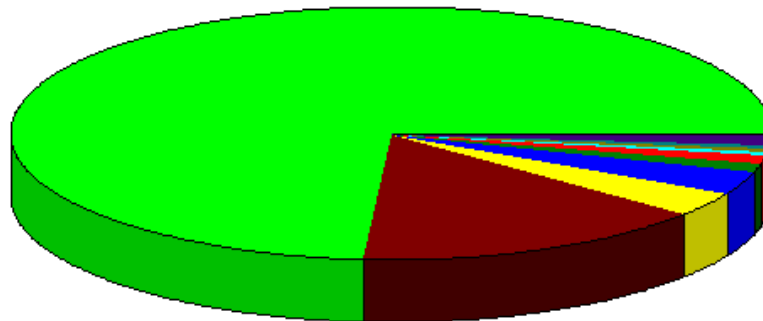
Treasurer's Report: Where's the Money Go?

Income and Expense by Month
February 28, 2009 through March 3, 2010

Income
Expense



Expense Summary
February 28, 2009 through March 3, 2010



Ice Rink Rent	%73.87
Referees	15.14
Scorekeepers	3.24
Awards	3.09
Jerseys and Socks Expense	1.25
Storage	1.06
Board Meeting	0.53
Miscellaneous	0.49
Accounting & Tax	0.41
Postage	0.26
Other	0.67
Total	\$142,875.82



USA Hockey Registration Changes

- For 2009 registrations, USA Hockey changed their registration period to May 1 – April 30
 - NCWHL extended Winter 2009 season from September 1 – April 30 to remain consistent with USA Hockey registration
- In November, USA Hockey announced they were returning to a Sept 1 – Aug 31 registration period
 - To comply with USA Hockey registration guidelines, the NCWHL needs to end the Summer 2010 season on Aug 31
- The NCWHL Summer 2010 Season will run from May 2 – Aug 31, 2010
 - If we continue the Saturday Ice Oasis slots, this should result in a total of ~20 fewer ice slots for the season
 - We're looking at eliminating some evaluation slots to increase the number of games available per skater
 - Registration fees may be slightly decreased for Summer 2010 only to reflect the changes in number of ice slots



Elections

President

Nominee(s): Nora Grasham

Vice President

Nominee(s): Jennifer Schwartz

Secretary

Nominee(s): Beth Littleton

Treasurer

Nominee(s): Carolyn Bierman

Blue Division Coordinator

Nominee(s): Char Shimada

Maroon Division Coordinator

Nominee(s): Rana Glasgal

Red Division Coordinator

Nominee(s): **Andrea Tan** &
Susie Guszella

Green Division Coordinator

Nominee(s): Marina Coleridge



Dates to Remember

- Saturday, April 3rd; Belmont @ 5:15 – GHATD
We need gear ...
- Saturday, April 10th – Summer 2010 Registration Opens
Register before fees increase on Sunday, May 2
- Sunday, April 11th – Assistance Fund Application Deadline
- Saturday, April 24th – Early Bird Raffle Deadline
Register by the 24th and you could win the raffle for 50% off your Summer 2010 registration fees
- Saturday, April 24th; Belmont @ 6:15 – GHATD Two
With two GHATDs, we need your help to spread the word! And we still need gear ...
- Sunday, May 2nd – Summer 2010 Evaluations Begin
Evaluation schedule TBD; Summer 2010 season runs May 2 – Aug 31





Q&A

Ice slots – always a challenge to get ice. Plan is to get one slot per person per week, however this could lead to back-to-back games.

Goalie jerseys – new jerseys will be black and white. Need to let refs know that goalies will no longer be wearing divisional colored jerseys.

Ice conditions at Belmont

- Nora has talked to Alyssa about Zamboni drivers need more training, area by boards is missed regularly

- let division coordinator know of specific issues to give to Nora so she can address with Alyssa

Refs – JJ occasionally can only get one ref and sometimes has to look outside her normal pool of people

Timing of Sunday slots at Fremont & Belmont- will this change to make it easier to get from one rink to the other? Nora will ask Fremont about this.



Raffle

Please support the organizations that made these donations.

- T-shirts (6)
- USAH hat
- Water bottle (3)
- \$25 of skate sharpening
- Free equipment sanitizing
- Free custom profiling and \$25 of skate sharpening
- NCWHL blanket (2)
- 50% off Summer 2010 fees – **Marie Farina**



Cross-Check Cleaners

@ Nazareth Ice Oasis
Tony Crossler

tcrossler@iceoasis.com



East West Hockey San Jose

(sharpening and profiling)

1535 South 10th Street

San Jose CA 95112

1 (408) 287 2244



Hockey X-Sport Superstore

Located within Dry Ice Hockey Arena

210 Hegenberger Loop

Oakland, CA . 94621

[510] 638-6004



Nazareth Ice Oasis

3140 Bay Rd

Redwood City, CA 94063

(650) 364-8090

iceoasis.com



Attendees

Nora Grasham
Marci Garcia
Carolyn Bierman
Beth Littleton
Charlotte Shimada
Rana Glasgal
Jennifer Schwartz
Marina Coleridge
Yvonne Cheng
Nancy Glidden
Holly Kreuter
Susi Guzsella
Felicia Kemp
Torie Oreilly
Leslie Stepanek

Andrea Tan
Liz Doughty
Wendy Burbrink
Irene LePage
JJ Nakano
Heather McLane
Janice Scott
Catherine Murty
Suzette Hrudowsky
Gwenn Rauchle
Ellen Woods
Marie Farina
Jennie Van Heuit
April Tse





Northern California Women's Hockey League

General Membership Meeting

March 6, 2010