



**Northern California  
Women's Hockey League**

**General Membership Meeting  
March 5, 2011**

Meeting called to order at 2:38 pm

Meeting adjourned at 3:45 pm

## Agenda

---

- 2:30 – 2:35 Welcome
- 2:35 – 2:45 2010 Goals & Accomplishments
- 2:45 – 2:50 2011 Goals
- 2:50 – 3:00 Vice President's Report
- 3:00 – 3:10 Treasurer's Report
- 3:10 – 3:25 Elections
- 3:25 – 3:30 Dates to Remember
- 3:30 – 3:50 Questions and Answers
- 3:50 – 4:00 Raffle



## 2010 Goals

---

### Enhance League Member Experience

- Continue inter-division engagement
- Maintain increased goalie engagement
- Benefit Tournament / Charity event

### Maintain Increased Player Registration

- Increase publicity and league exposure
- GHATD player conversion
- Player retention
- Publicize and continue NCWHL Assistance Fund & Referral Bonus
- Offer best league value in Bay Area



**2010 Goals: Enhance League Member Experience**

---

- ✓ Continue inter-division engagement
  - 7 League-wide Scrimmages and 6 Divisional Scrimmages
  - Maroon / Blue Skills Practices
  - Labor Day Tournament
  - Annual Picnic
- ✓ Maintain increased goalie engagement
  - Evaluations and skills feedback
  - Goalie clinics
- 🕒 Benefit Tournament / Charity event
  - NCWHL Labor Day Tournament
- ✓ Other
  - Smaller team / bench sizes ...



NCWHL GENERAL MEMBERSHIP MEETING --- March 2011 4

Smaller team/bench sizes: 4 teams Green, 5 teams Red, 6 teams Maroon, 4 teams Blue

**2010 Goals: Maintain Increased Player Registration**

- ✓ **Increase publicity and league exposure**  
Girl Scouts & Facebook Page
- 🕒 **GHATD player conversion**  
April 2010 GHATD 1 – 26% conversion; April 2010 GHATD 2 – 18% conversion;  
Aug 2010 GHATD – 9% conversion
- ✓ **Player retention**  
League has grown 24% since Winter 2007; average 90% returning skaters  
Maintaining division growth: 4 teams in Green, 5 teams in Red, 6 teams in Maroon, 4 teams in Blue
- ✓ **Publicize and continue NCWHL Assistance Fund & Referral Bonus**  
Referral Bonus: 19 bonuses paid in 2010, first year of the program  
Assistance Fund: 6 awards in 2010; 26 awards in 4 years of program
- ✓ **Offer best league value in Bay Area**




**NCWHL GENERAL MEMBERSHIP MEETING --- March 2011** 5

Girl Scout event: helped girl scout troop earn their winter sports badge – refer to facebook page for video

### Comparison of Bay Area Adult Hockey Leagues

League	Rinks	Ice Slots / Season	Cost / Season	Cost / Ice Slot
<b>NCWHL</b>	<b>Belmont, Fremont, Redwood City</b>	<b>19</b>	<b>\$415</b>	<b>\$19.76</b>
Sharks Ice Adult Hockey League	Oakland, San Jose, Fremont	24 plus playoffs	\$567	\$22.31
Pacific Hockey Association	Cupertino, San Mateo	16 plus Playoffs	\$488	\$27.11
San Francisco Adult Hockey League	Yerba Buena	16 (plus playoffs?)	\$380	\$23.75
Ice Oasis	Redwood City	26 (including playoffs)	\$815	\$31.35

1. Prices as of February 2010 for the current season  
 2. Price for Sharks Ice, PHA, and SFAH can change depending on the number of players a team chooses to put on its roster. The costs above are calculated based on 15 players per team, the NCWHL maximum.  
 3. For Sharks Ice and PHA, playoffs are not always guaranteed. This calculation assumes 2 playoff games.



**NCWHL GENERAL MEMBERSHIP MEETING --- March 2011**

Notes:

1. Prices as of February 2010 for the current season
2. Price for Sharks Ice, PHA, and SFAH can change depending on the number of players a team chooses to put on its roster. The costs above are calculated based on 15 players per team, the NCWHL maximum.
3. For Sharks Ice and PHA, playoffs are not always guaranteed. This calculation assumes 2 playoff games.

### NCWHL Publicity

**Jen Fong will drive any distance to play hockey** <http://www.sfgate.com/cgi-bin/article.cgi?f=/c/a/2010-03-22/CO1B1C3NVD.DTL>  
Seen Whiting  
Monday, March 22, 2010 [http://www.mercurynews.com/peninsula/ci\\_17432864?source=rss&nclclick\\_check=1](http://www.mercurynews.com/peninsula/ci_17432864?source=rss&nclclick_check=1)

POST | EMAIL | PRINT | COMMENT | SHARE | FAVORITE | RSS

**Jen Fong, 38, of San Francisco**  
Each time her ice hockey skills are

**These hockey moms don't just drive SUVs, they take the ice in San Jose**

By **Judy Siskin**  
jsiskin@mercurynews.com  
Journalist: 408/952-2025; 408/952-3845  
Published: 02/24/2011 04:48:17 AM PST



**Lady Skates**

**Randy Hahn**  
Hey ladies, give hockey a try!  
[http://www.ncwhl.com/gtati/GHATD11\\_March19.pdf](http://www.ncwhl.com/gtati/GHATD11_March19.pdf)  
[www.ncwhl.com](http://www.ncwhl.com)

February 17 at 10:11am · Unlike · Comment · Share

Like · Charlotte Shehadi, Jennifer Morris, Jena Yamada and 20 others like this.

View all 16 comments

**Marc Garcia** Thanks Randy! The NCWHL rocks, been skating for 8+ years and have loved every minute of it and had only tried to skate back before I tried GHAHO.

February 18 at 10:45am · Like

**Maria Pia Dimitrakos** Love the game of hockey!

February 19 at 3:43am · Like

Write a comment...



**NCWHL GENERAL MEMBERSHIP MEETING --- March 2011** 7

NCWHL Publicity: Girl Scout Event



NCWHL GENERAL MEMBERSHIP MEETING --- March 2011

## 2011 Goals

---

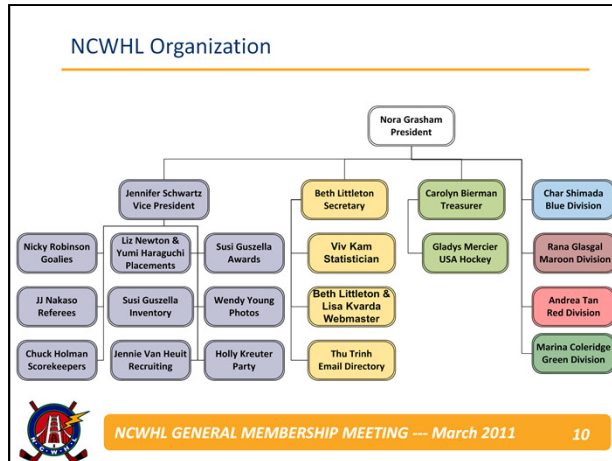
### Enhance League Member Experience

- Continue inter-division engagement
  - League-wide and divisional scrimmages, tournaments
- Support ongoing skill development
  - Goalies
  - Maroon / Blue skills sessions

### Maintain Player Registration

- Increase publicity and league exposure
- GHATD player conversion
- Player retention
- Publicize and continue and NCWHL Assistance Fund & Referral Bonus
- Offer best league value in Bay Area





### Vice President's Report

---

- Award Coordinator – Susi Guszella
- Coach Coordinator – Katherine Yoshii
- Goalie Coordinator – Nicky Robinson
- Photo Coordinator – Wendy Young
- Party Coordinator – Holly Kreuter
- Placement Coordinator – Liz Newton & Yumi Haraguchi
- Recruitment Coordinator – Jennie Van Heuit
- Referee Coordinator – JJ Nakaso
- Scorekeeper Coordinator – Chuck Holman



**GHATD**

Saturday, March 19, 2011

Belmont Iceland

6:30 to 8:30 PM

Sold out!

We still need gear!

Contact Jennie at:

[NCWHL.ghatd@gmail.com](mailto:NCWHL.ghatd@gmail.com)

**WOMEN  
GIVE HOCKEY A TRY!**

**GIVE HOCKEY A TRY DAY**  
SATURDAY MARCH 19, 2011  
6:30 to 8:30 pm

**LEARN TO PLAY HOCKEY  
IN A FUN & SAFE ENVIRONMENT!**  
NO SKATING NEEDED!  
NO EQUIPMENT NEEDED!

**BELOUNT ICELAND**  
222 East Avenue Road  
Belmont CA 94502-0013  
[www.belmontice.com](http://www.belmontice.com)

**COST \$20**

**Give Hockey A Try Day (GHATD)** is an opportunity for women of ALL ages to try hockey in an encouraging & safe setting. The Northern California Women's Hockey League (NCWHL) will dress you in the necessary gear, give you on-ice instruction, and finish off the session with a scrimmage. \*Minimum age 12

To Register, Email:  
[NCWHL.GHATD@GMAIL.COM](mailto:NCWHL.GHATD@GMAIL.COM)  
Please email your name, email address, phone number, and women's hockey size (S, M, L, XL)

**REGISTER EARLY!** Spaces fill up quickly for this popular event!

NORTHERN CALIFORNIA WOMEN'S HOCKEY LEAGUE | [WWW.NCWHL.COM](http://WWW.NCWHL.COM)

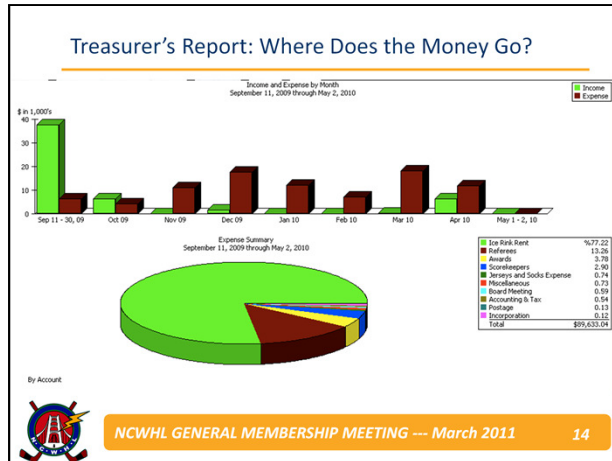
### Treasurer's Report: P&L\*

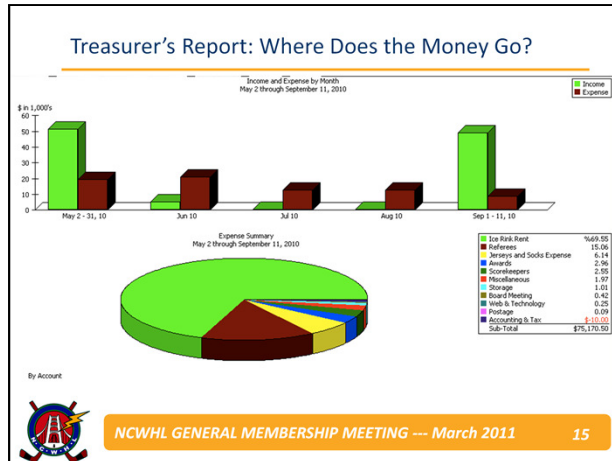
	Winter 2009-10	Summer 2010
Income	\$85,552.69	\$64,952.17
(Expense)	-\$89,633.04	-\$75,170.50
<b>Profit/(Loss)**</b>	<b>-\$4080.35</b>	<b>-\$10,218.33</b>

\* These statements have not been verified or audited

\*\* We intentionally ran at a loss for two seasons to move account "buffer" to ~\$40K







Elections	
<b>President</b>	<b>Blue Division Coordinator</b>
Nominee(s): Nora Grasham	Nominee(s): Char Shimada
<b>Vice President</b>	<b>Maroon Division Coordinator</b>
Nominee(s): Jennifer Schwartz	Nominee(s): Rana Glasgal
<b>Secretary</b>	<b>Red Division Coordinator</b>
Nominee(s): Viv Kam	Nominee(s): Andrea Tan
Gwenn Rauchle	<b>Green Division Coordinator</b>
Felicia Kemp	Nominee(s): Marina Coleridge
<b>Treasurer</b>	
Nominee(s): Carolyn Bierman	



NCWHL GENERAL MEMBERSHIP MEETING --- March 2011 16

- All nominees for positions other than Secretary were unanimously re-elected to the board.
- Beth Littleton has decided to step down from the board after 12-13 years.
- Nominees for Secretary gave a short talk on why they want to be league secretary.
  - Viv
  - Gwenn
  - Felicia – league ref
- Viv Kam was elected as new league Secretary.

### Dates to Remember

---

- **Tuesday, March 1<sup>st</sup>** – Summer 2011 Registration Opens  
Register before fees increase on Saturday, April 2
- **Sunday, March 13<sup>th</sup>** – Assistance Fund Application Deadline
- **Friday, March 18<sup>th</sup>** – Early Bird Raffle Deadline  
Register by the 18<sup>th</sup> and you could win the raffle for 50% off your Summer 2011 registration fees
- **Saturday, March 19<sup>th</sup>**; Belmont @ 6:30 – GHATD  
We need gear ...
- **Friday, April 1<sup>st</sup>** – Summer 2011 Evaluations Begin  
Evaluation schedule TBD; Summer 2011 season runs April 1 – Aug 31



NWHL GENERAL MEMBERSHIP MEETING --- March 2011

17

Eval sessions: is this a league-wide evaluation or just for those skaters wanting to move up?  
We are NOT having a league-wide evaluation. Returning skaters who are NOT trying out for a higher division should attend the sessions for conditioning.



What about getting ice in Oakland? We have asked the league members about this and response has not been favorable. We will continue to look at this on a season-by-season basis.

If the league continues to grow at the current rate, at what point do we decide that the league is "big enough"?

Number of slots per team/skater: have we had more breaks between games? No. It seems that way for winter 2010 season because of holiday/tourney breaks and shorter season because of change to USAH registration.

What about increasing discount for GHATD skaters from \$50 to \$100? We will discuss this at the next board meeting.

Gear sales: who to contact? Contact the inventory coordinator if you have gear to donate to league. If you want to sell your own gear you can post an email to the league's Yahoo!Group. (need to remind Susi Guszella to send email to league about donating and selling gear)

Credit for injury or pregnancy? Yes, the league gives credit for injured or pregnant skaters/goalies. Need to contact your division coordinator as soon as you are injured or cannot skate for the remainder of the season. Credit is calculated based on how many slots you have left in the season.

Who handles the email lists? Thu manages the Yahoo!Groups mail group. Division coordinators manage the mail list for their division.

Bench coaches for Maroon? Seems learning the game doesn't continue once you get into Maroon/Blue.

- We've had Maroon coaches in the past. Currently we are taking an opportunistic approach using husbands, partners, etc as bench coaches.

## Raffle

*Please support the organizations that made these donations.*

- Shock Dr Jocks (15)
- HATRIC hats
- HATRIC t-shirts
- NCWHL bag (3)
- 2 tickets to Sharks vs Stars (3/5, 7:30PM)
- 50% off Summer 2010 fees



HATRIC 341  
[hatric341.com](http://hatric341.com)

### All Star Hockey

@ Nazareth Ice Oasis  
3140 Bay Rd  
Redwood City, CA 94063  
(650) 364-8090  
[www.allstarhockey.com](http://www.allstarhockey.com)



Nazareth Ice Oasis  
3140 Bay Rd  
Redwood City, CA 94063  
(650) 364-8090  
[iceoasis.com](http://iceoasis.com)



NCWHL GENERAL MEMBERSHIP MEETING --- March 2011

19

1/2 off summer 2011 fees

- Suzette Hrudowsky



**Northern California  
Women's Hockey League**

**General Membership Meeting  
March 5, 2011**

## Attendees

---

